

Epicor Tax Connect

Robust SaaS Solution for Automating Sales and Use Tax Management

Epicor Tax Connect tackles miscellaneous taxation challenges such as situs, nexus, tax tiers, tax holidays, trade-in, write-offs, short pays, and product taxability issues. Epicor Tax Connect offers access to a unique tax determination service powered by Avalara—the only one with a guarantee on the correctness of tax rates. This is essential when there are more than 11,000 taxation rules in North America alone. Avalara is a trusted ISV alliance partner of Epicor since 2006.

Tax Management Automation

Epicor Tax Connect permits an easy and efficient way to manage your sales tax. The application is flawlessly integrated to all major Epicor products and connects to a constantly updated live service to get the most accurate sales and use tax rates for all sales transactions. Epicor Tax Connect helps determine sales tax automatically depending on the origin and the target of a sales transaction.

Tax Reporting

A comprehensive tax reporting and tax filing solution is also part of Epicor Tax Connect, allowing it to generate legally required tax reports in multiple states and different tax jurisdictions.

Manufacturers and distributors benefit largely from the tax exempt certificate management that supports B2B and B2C transactions. Epicor Tax Connect also integrates to eCommerce solutions and web stores, allowing customers get the appropriate tax rates at checkout.

Designed To Save You Time and Cost

Epicor Tax Connect fits most business types, especially when business is constantly done with new customers.

It is a time- and cost-saving solution for enterprises with business partners or customers in multiple states that would generate manual work to validate addresses and apply the proper tax rates.

Businesses benefit from a software solution that calculates tax swiftly, automatically, and accurately—always knowing the latest rules.

Flawless Integration to Epicor ERP

Thanks to the integration, it's easy to implement Epicor Tax Connect in Epicor ERP platforms—it is basically an activation that can be performed in minutes.



At a Glance

Developer: Avalara
ISV Alliance partner of Epicor

Real-time access to the most current rates and taxability

End-to-end compliance and accuracy for all your transactional tax needs

Manage Tax Exempt Certificates and Returns



No changes are needed to already functioning business processes, and users immediately see the benefits without additional setup or training. You do not need to look up the latest tax regulations, and you do not have to spend time on address validations—Tax Connect does it all automatically under the hood.

Expand Your Business to More States

Saving time and money with automated tax management software that reduces nonrevenue-generating tasks allows businesses to focus on their key activities and business growth.

Epicor Tax Connect minimizes audit risks and reduces manual errors to save time and energy otherwise spent correcting mistakes. Epicor Tax Connect also helps businesses expand their operations in multiple states, contributing to growing the business and revenue.

Sales tax reports can also be easily generated on demand—doing business in more states does not mean spending more time on tax management.

The Power of Epicor Tax Connect

Cloud Support

Epicor Tax Connect supports cloud deployed ERP systems, as it also works over the Internet—being a native Software as a Service (SaaS) with scalable and subscription-based licensing and pricing. However, Epicor Tax Connect is also available for onpremises deployments.

Address Validation

The Epicor Tax Connect calculation engine encompasses the most accurate and up-to-date address data available. Input addresses are automatically checked and corrected for spelling errors and inaccurate street names. Five-digit zip codes are appended to nine-digit accuracy.

Sourcing Rules

Using advanced geocoding technology, transaction addresses are pinpoint positioned within all applicable jurisdiction boundaries.

Geo-positioning provides the basis for precise identification of tax jurisdictions and roll-up to a total tax rate.

Jurisdiction Assignment

The Epicor Tax Connect service includes researched and validated system tax codes. These provide highly accurate product taxability assessments and help ensure the correct rates are calculated for all products and services.

Product Taxability

Epicor Tax Connect is programmed with the latest information for handling destination-based, origin-based, and hybrid sourcing rules, ensuring the most accurate assignment of tax rates for individual transactions.

Reporting and Filing

Epicor Tax Connect generates summary and detailed reports on demand—easily and accurately. Export your data for filing or for complete end-to-end automation, and use Epicor Tax Connect Returns for fully outsourced sales tax compliance management.

Going Beyond Tax Calculations

Epicor Tax Connect CertCapture

Certificate management application lets you limit your non-taxed transaction audit liability. Help ensure that valid certificates are immediately accessible through electronic collection, storage, and management.

Epicor Tax Connect Returns

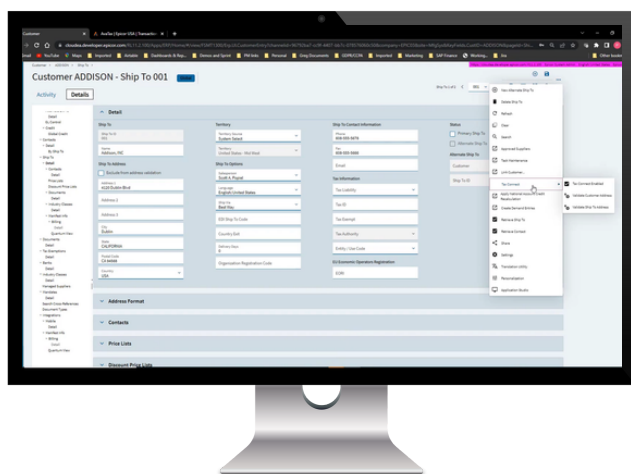
Help ensure timely and accurate transactional tax filing and remittance—with simplicity. File returns and remit payments on time using a single payment solution. Whether the jurisdiction requires e-filing or mailed in hard-copy returns, Epicor Tax Connect Returns performs the job.

Epicor Tax Connect Custom Connect API

With the REST Application Programming Interface (API), it is possible to build out fully customized integrations that leverage the power of Epicor Tax Connect.

Epicor Tax Connect Global

Calculate taxes for more than 200 countries beyond the United States and Canada. This is a seamless extension of tax calculations for customers in North America doing business within the European Union (EU) and selected countries worldwide.



EPICOR

We're here for the hard-working businesses that keep the world turning. They're the companies who make, deliver, and sell the things we all need. They trust Epicor to help them do business better. Their industries are our industries, and we understand them better than anyone. By working hand-in-hand with our customers, we get to know their business almost as well as they do. Our innovative solution sets are carefully curated to fit their needs, and built to respond flexibly to their fast-changing reality. We accelerate every customer's ambitions, whether to grow and transform, or simply become more productive and effective. That's what makes us the essential partners for the world's most essential businesses.

Contact Us Today: info@epicor.com | www.epicor.com

The contents of this document are for informational purposes only and are subject to change without notice. Epicor Software Corporation makes no guarantee, representations, or warranties with regard to the enclosed information and specifically disclaims, to the full extent of the law, any applicable implied warranties, such as fitness for a particular purpose, merchantability, satisfactory quality, or reasonable skill and care. This document and its contents, including the viewpoints, testimonials, dates, and functional content expressed herein are believed to be accurate as of its date of publication, August, 2022. Use of Epicor products and services are subject to a master customer or similar agreement. Usage of the solution(s) described in this document with other Epicor software or third-party products may require the purchase of licenses for such other products. Epicor and the Epicor logo are trademarks or registered trademarks of Epicor Software Corporation in the United States, and in certain other countries and/or the EU. Copyright © 2022 Epicor Software Corporation. All rights reserved.